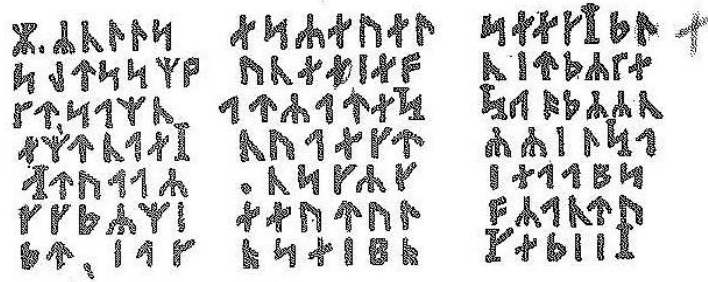


**Competition 3.2: Reading the Runes**



m.rnlls  
 sgtssmf  
 kt,samn  
 emtnael  
 Atvaar  
 ccdirmi  
 dt,iac

esreuel  
 unteief  
 atrateS  
 nuaect  
 .nscrc  
 eeutul  
 oseibo

seec]de  
 niedrke  
 Saodrrn  
 rriISa  
 ieaabs  
 frantu  
 KediiY

Using what you have learned about Jules Verne's version of the Icelandic runes, given above, what does the following text mean?

Beware: There are a few letters that do not fit exactly – see if you can decipher them!

ÞT AYTIFTKT NFKTKK FTBV  
 HIY KTKT YNBYBTKIKJ BKTK  
 FKFKIBTB IK HIY BAKITKTY BIKY  
 TK KE BAKTKTKIEKY YTK

### How to enter

1. Complete your competition entry and make sure it follows the guidelines listed below
2. Fill out the [Competition Cover Sheet](#)
3. Email your entry and your cover sheet to us at [inspire@sjc.ox.ac.uk](mailto:inspire@sjc.ox.ac.uk)

### Terms & Conditions

1. You must complete the [Competition Cover Sheet](#) and submit it along with your entry to [inspire@sjc.ox.ac.uk](mailto:inspire@sjc.ox.ac.uk) before the closing date. If we do not receive a completed cover sheet with your entry, we will NOT be able to consider the entry.
2. The competition closes at **5pm on Monday 23 March 2020**. Once you submit your entry you will receive an automated confirmation that your entry has been submitted.
3. The work you submit must be entirely your own and should show the work you did to arrive at your answer. We will accept a typed version of your work, or a scan or photo of handwritten work as long as it is clearly legible.
4. Competition winners will be contacted via email about a week after the competition's closing date. The following prizes will be awarded:
  - a. The first five pupils to submit the correct answer will receive a £10 Amazon voucher each
  - b. Everyone who submits the correct answer will have their name listed on Inspire Digital